

How to Log into A MAC Studio Desktop

Created by the Chief Technology Officer

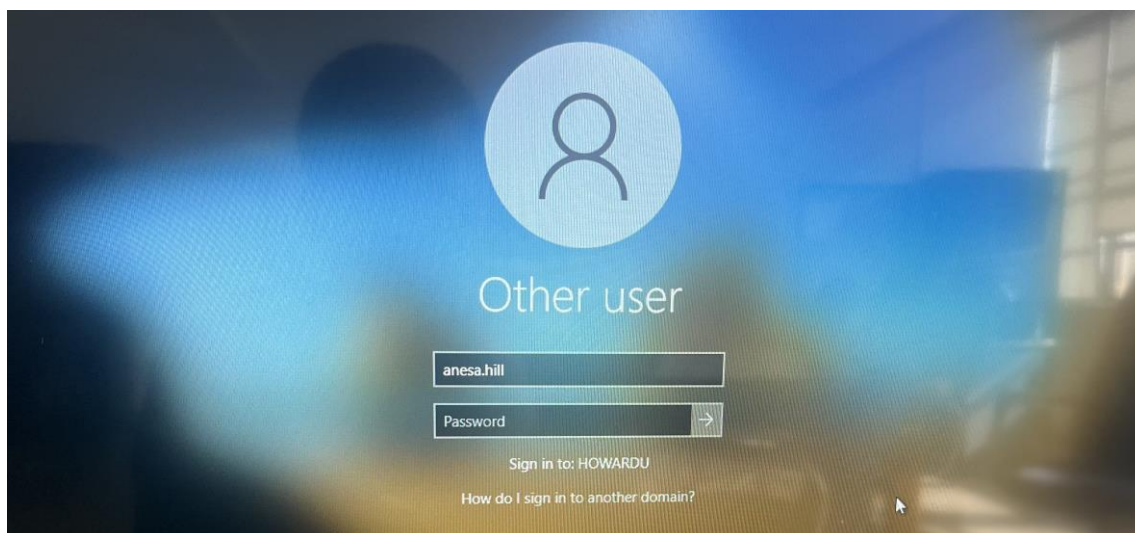
Date: August 8, 2023

Version 1.0

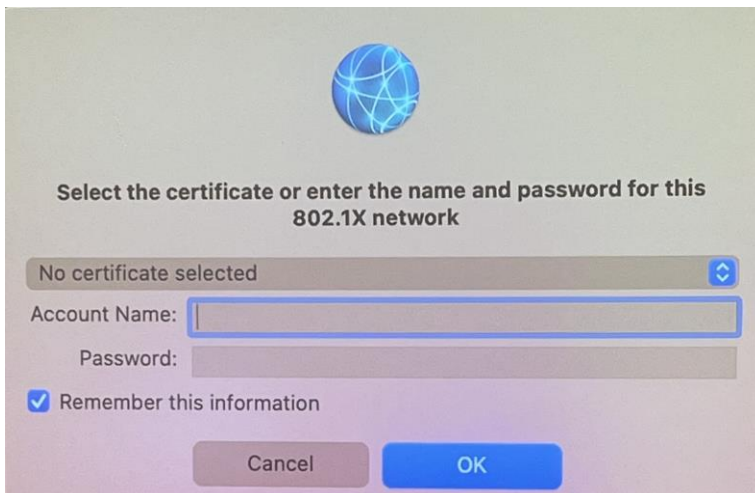
On MAC Studio Desktops

The 802 1X Certification Pop-up Network Notification Procedure

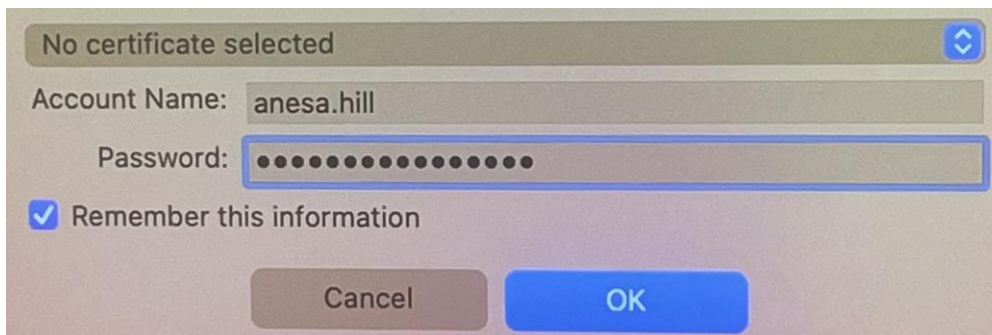
This quick reference guide is designed to show Howard University students, faculty and staff how to securely log into the computer lab MAC Studio Machines.



1. Choose the “Other user” login option to begin. Sign into the computer by using your Howard University Outlook credentials. For example, Login: **“firstname.lastname” and password: xxxxxxxxxxxx.** Then hit **“Enter.”**
2. Once in, you will be prompted by Howard University’s 802 1X network certificate pop-up window to enter your Howard credentials again.

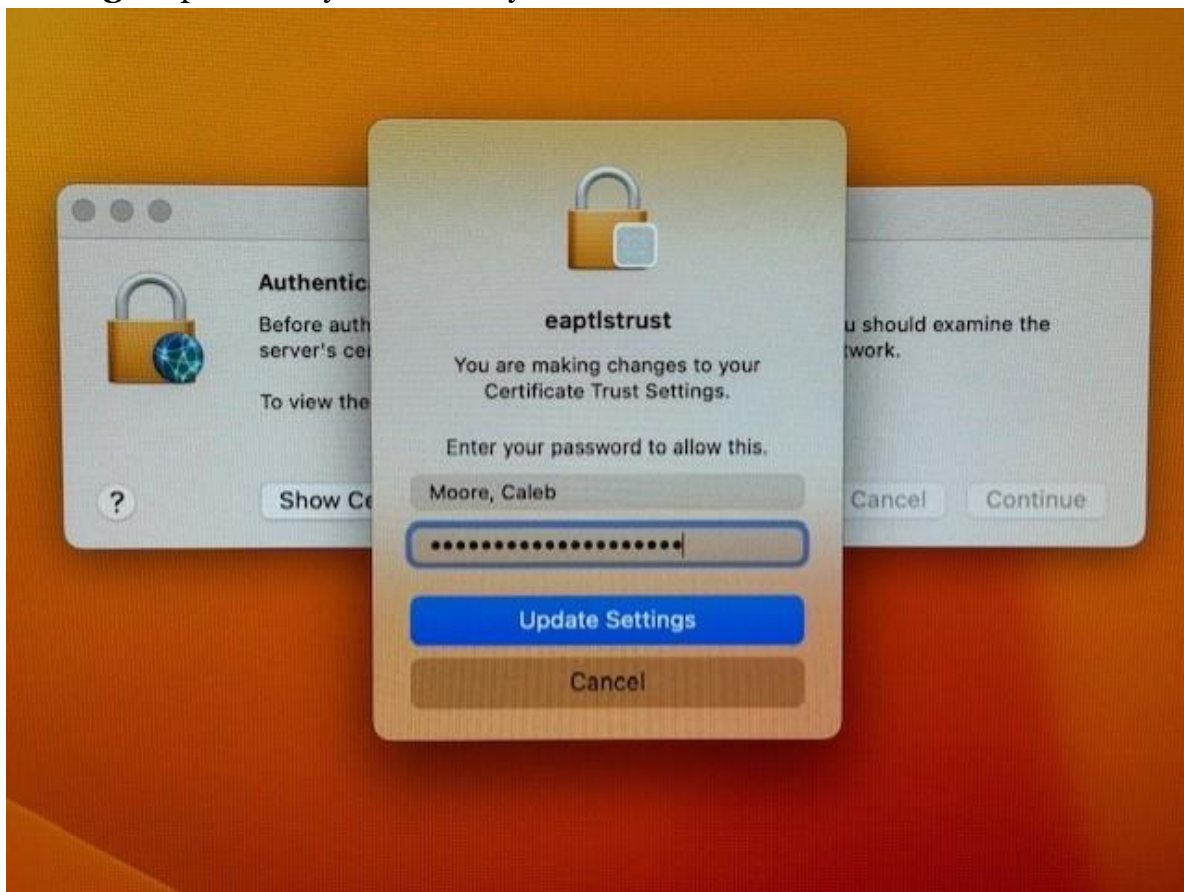


3. Do not select a certificate just login again using the same Outlook credentials.



4. Select the “**Remember this information**” check box and click “**OK**”.

5. After correctly entering the credentials for this second time, you will be prompted to **enter only your password again once more**, then click the “**Update Settings**” option and you are finally in on the machine.





6. This screen will appear free of any further pop-ups and ready for work to begin.
 - 6.1. If this is your first time logging into this computer, you may see Microsoft pop-up windows to personalize your experience.
 - 6.2. Please ignore any system pop-ups at the top right by clicking “X” to close.
 - 6.3 Done.